



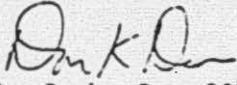
50-322

UNITED STATES
NUCLEAR REGULATORY COMMISSION
WASHINGTON, D. C. 20555

April 12, 1979

MEMORANDUM FOR: Victor Stello, Director, TMI Operations
FROM: Don Davis, Duty Officer Team B
SUBJECT: UPDATE ON HEADQUARTERS ADVISORY REPORT

Attached is additional detail on the April 11 report addressing specific valve designation for containment isolation penetrations.


Don Davis, Duty Officer Team B

7905110/35

96 102

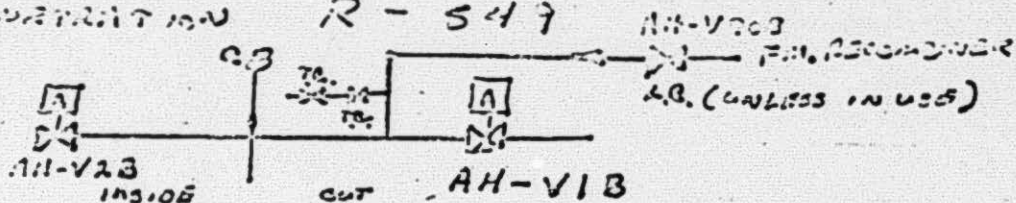
P

PURGE VALVES

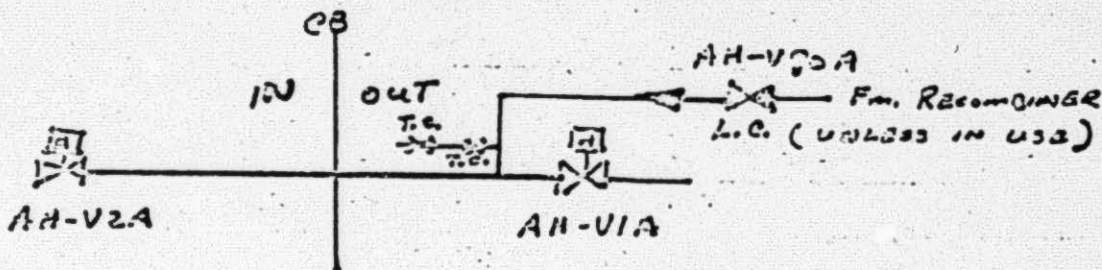
DWG. NO

2011

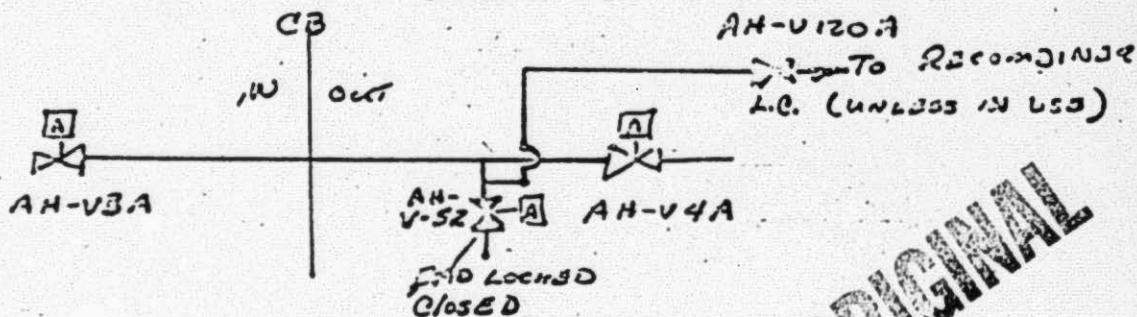
PENETRATION R-547



PENETRATION R-550

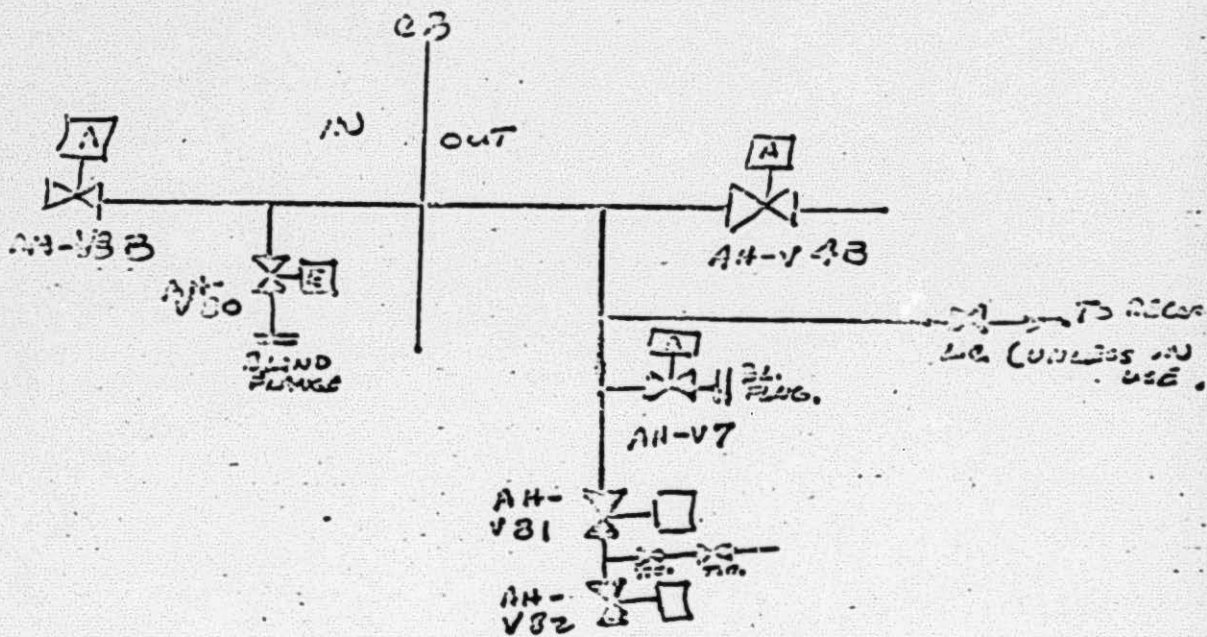


PENETRATION R-551



POOR ORIGINAL
96 103

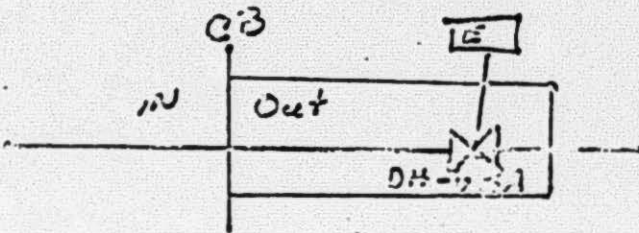
DESTRUCTION R-552



POOR ORIGINAL

Reactor Building Emergency Sump
Suction Lines
Draw. No. 2026

PENETRATION R-593

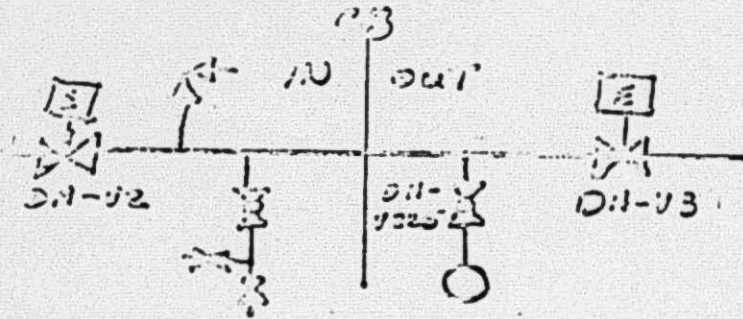


PENETRATION R-594 (SAME AS ABOVE)
Valve No. DH-163

PROLIFERATION
96 105

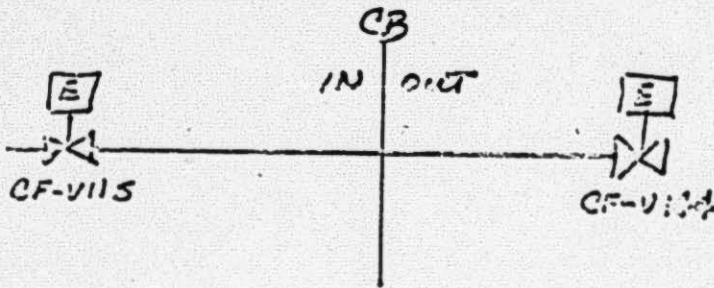
PENETRATION No. R-525
 Daily Heat Charge Injection

DWG. No. 2076



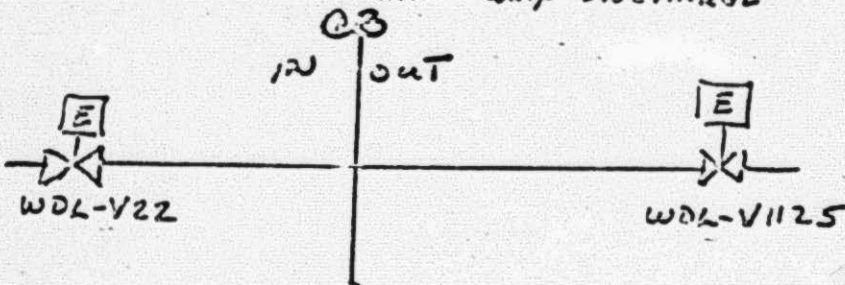
PENETRATION No R-527
 CO2 Flood Tank Bleed & Sample

DWG. No. 2034



PENETRATION No. R-529
 REACTOR Coolant Drain Pump Discharge

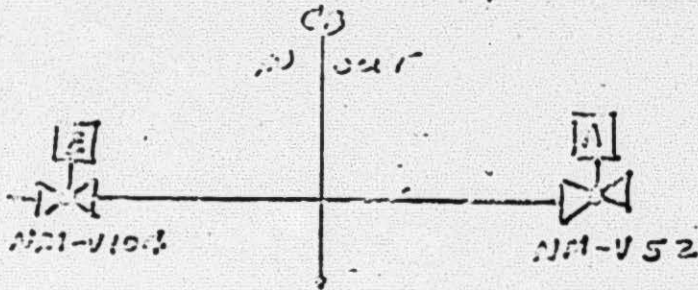
DWG. No. 2027



POOR ORIGINAL
 96 106

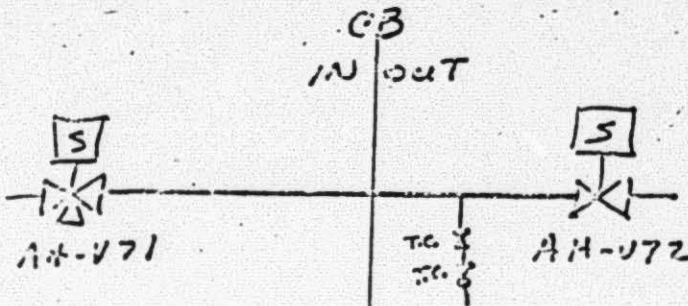
Penetration No. R-543
 Airplane Engine Blby. Damper

Doc. No. 2036



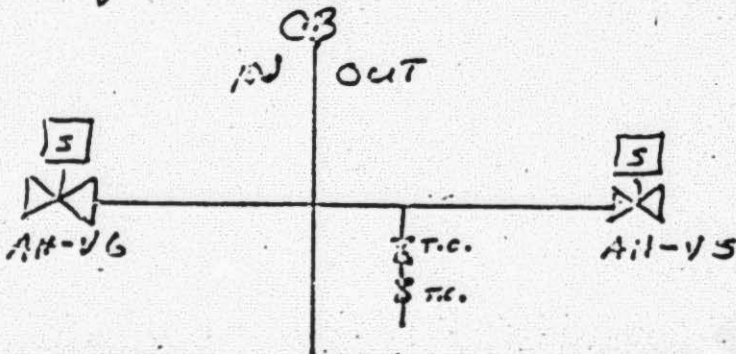
Penetration No. R-554 D
 INST. AIR DUCT VENT DAMPER

Doc. No. 2041



Penetration No. R-562 B
 R.B. Purge Exhaust Fan AP Control

Doc. No. 2041

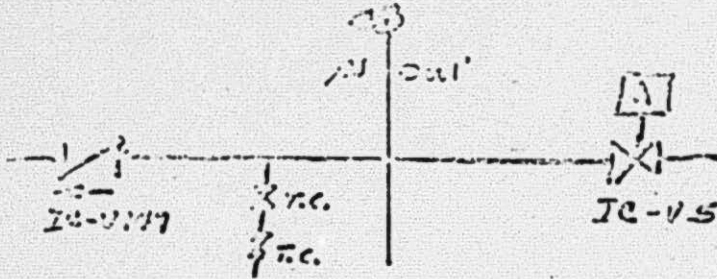


96 107

PENETRATION No. R-557

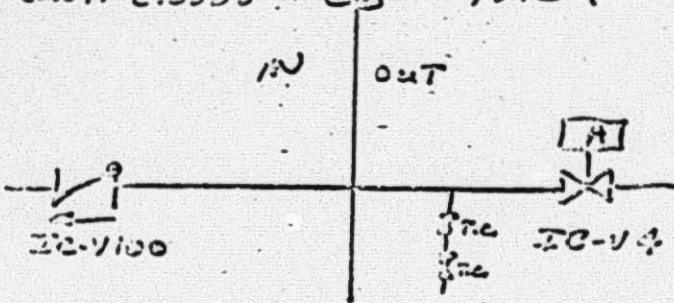
DWG. No. 2027

INT. CLOSED COOKING SYSTEM



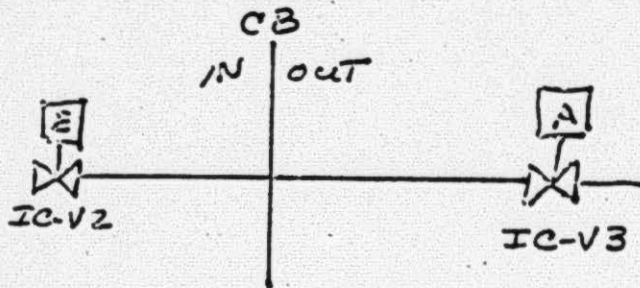
PENETRATION No. R-563
INT. CLOSED COOKING SYSTEM

DWG No. 2027



PENETRATION No. R-567
INT. CLOSED COOKING SYSTEM

DWG. No. 2029

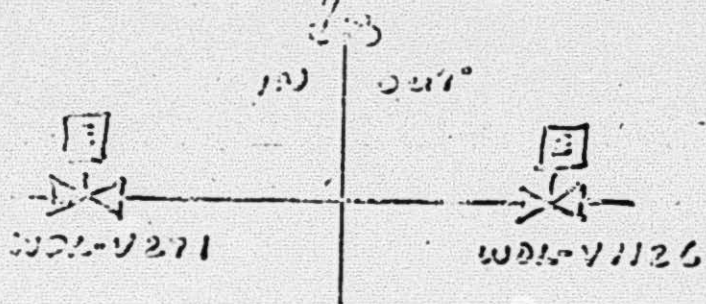


96 103

DEMONTAGE No. 2-557

DWG. 1, 204.

Removal of Supercharger Drive

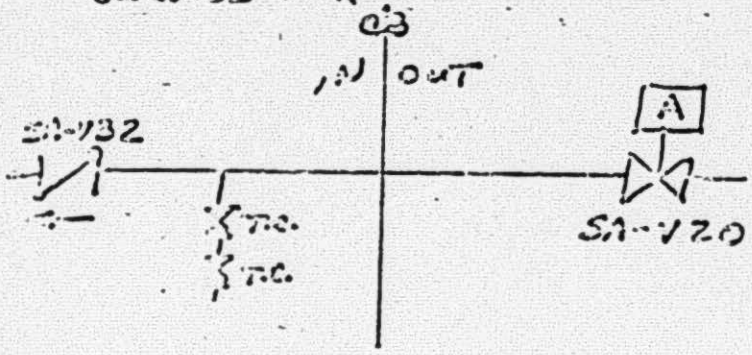


DEMONTAGE No. 2-566

DWG. 2014

SERVICE AIR

SHEETS 1 of 3



96 109